

Guy, Lydia

From: Dangelo, AJ
Sent: Tuesday, May 28, 2013 3:42 PM
To: Guy, Lydia
Attachments: 534 Hampton Place Limited Lead Paint Inspection.pdf

Lydia:

Attached is a .pdf copy of the 12/17/2007 LBP inspection report for 534 Hampton Place, Portsmouth, VA that was requested, under the FOIA, by Debbie L. Pucket with the law offices of Richard J. Serpe, P.C.

Sincerely,

A.J. D'Angelo

A.J. D'Angelo
Sr. Assistant Regional Counsel
Office of Regional Counsel (3RC30)
U.S. EPA, Region III
1650 Arch Street
Philadelphia, PA 19103-2029
Tel. (215) 814-2480
Fax (215) 814-2603
e-mail: dangelo.aj@epa.gov

THIS TRANSMISSION MAY CONTAIN DELIBERATIVE, ATTORNEY-CLIENT, ATTORNEY WORK PRODUCT OR OTHERWISE PRIVILEGED MATERIAL. DO NOT RELEASE WITHOUT APPROPRIATE REVIEW. IF THIS MESSAGE HAS BEEN RECEIVED BY YOU IN ERROR, YOU ARE INSTRUCTED TO DELETE THIS MESSAGE FROM YOUR MACHINE AND ALL STORAGE MEDIA, WHETHER ELECTRONIC OR HARD COPY.

**APPLIED
LABORATORY
SERVICES**

December 17, 2007

Old Hampton, LLC
208 87th Street
Virginia Beach, Virginia 23451
C/O Mr. Bernie Kitsch

Re: Window and Door Limited Lead Paint Inspection,
534 Hampton Place Portsmouth, Virginia

Dear Mr. Kirsch:

As per your request, Applied Laboratory Services, LLC (ALS) performed a Lead-Based Paint (LBP) Inspection limited to windows and doors within Apartments 1 and 2 at the property located 534 Hampton Place Portsmouth, Virginia. The purpose of the LBP inspection was in support of SEP Requirements and Obligations at the property. The inspection was conducted on December 13, 2007 by ALS Virginia Licensed Lead Inspector and Lead Designer Paul Thomas.

The LBP inspection was conducted utilizing an X-ray Fluorescence (XRF) lead-measuring instrument. The inspection was conducted in accordance with the United States Environmental Protection Agency (EPA) guidelines specify a positive determination of lead in paint when the lead content is equal to or greater than 1.0 milligrams of lead per square centimeter of painted surface (mg/cm^2) when measured by XRF. A total of three hundred and nine surfaces were tested for lead content of the fifty one windows planned to be replaced and of the twenty-three doors planned to be replaced at the property. Window components tested included interior window casings, sills, aprons, sashes and exterior troughs and sashes. Door components tested included doors, door frames and door jambs.

At the conclusion of onsite testing all of the fifty-one windows tested were found to contain LBP. Evidence of paint chips was observed within most window troughs, many of the windows had cracking and peeling paint. At the conclusion of onsite testing of the twenty-three doors LBP was identified on fourteen of the door components tested. The interior door within the second floor kitchen and both exterior doors within the second floor apartments contained LBP. All of the eleven door components within the first floor apartment were positive for LBP. Most painted surfaces on door components were observed to be intact however several showed evidence of peeling and/or damaged paint.

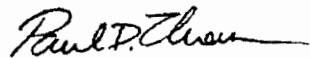
Old Hampton, LLC
Mr. Bernie Kitsch
December 17, 2007
Page 2 of 2

Many surfaces not identified to be LBP were found to contain lower levels of lead and are considered lead containing paints; the requirements of the OSHA Lead in Construction Standard, 29 CFR 1926.62 must be complied by all contractors disturbing painted surfaces, as OSHA does not have a minimum concentration reporting limit. At a minimum the spread of dust should be controlled during selective renovation activities.

Applied Laboratory Services recommends that all future planned window and door replacement activities be performed by a Lead Paint EPA Certified Lead Contractor. Contractor must comply with all applicable Federal, State and Local Regulations while performing replacement activities. Additionally; contractor should be made aware of the requirements outlined within the SEP Requirements and Obligations. At the conclusion of replacement activities Lead Clearance Wipe testing must be performed as outlined within the SEP Requirements and Obligations, and in accordance with applicable Federal, State and Local Regulations.

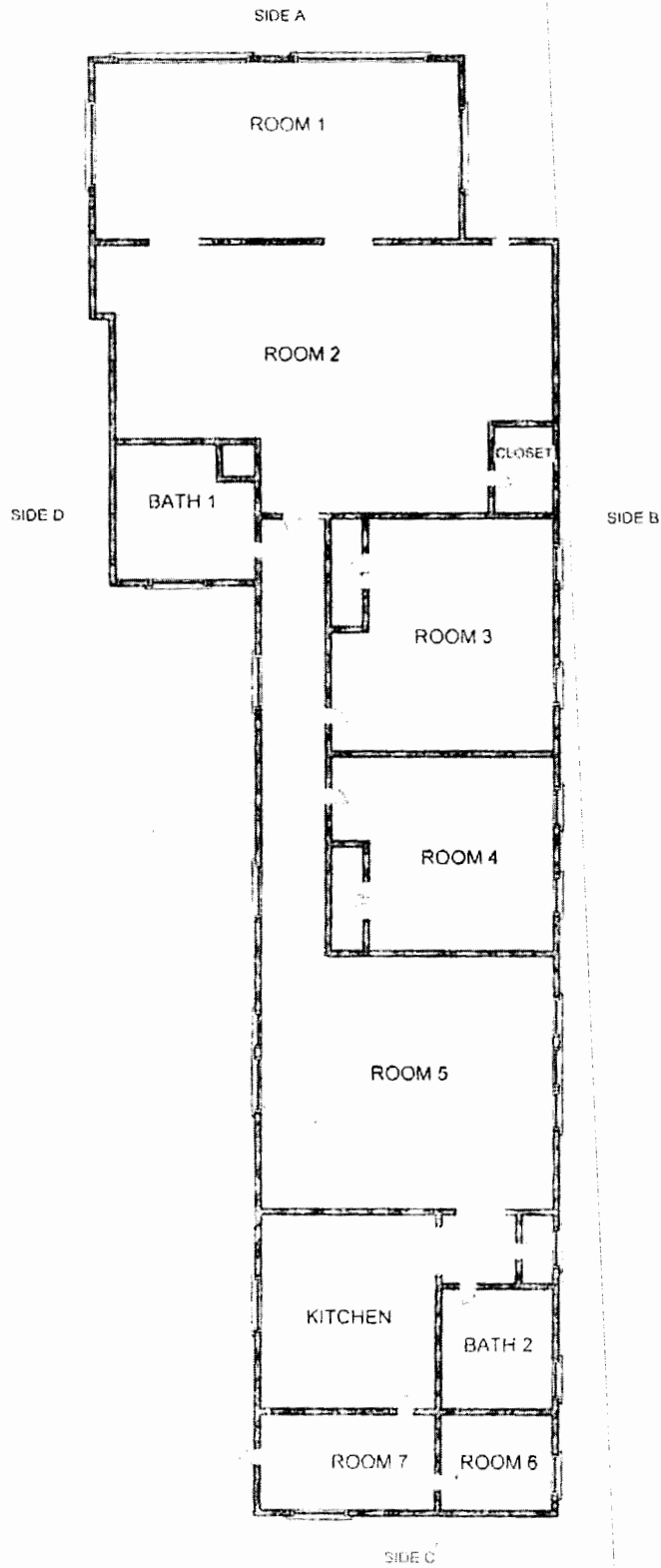
Attached is the Lead Paint testing data results, and a sketch of the areas surveyed. Should you have any questions or need additional information please contact our office.

Sincerely,
Applied Laboratory Services



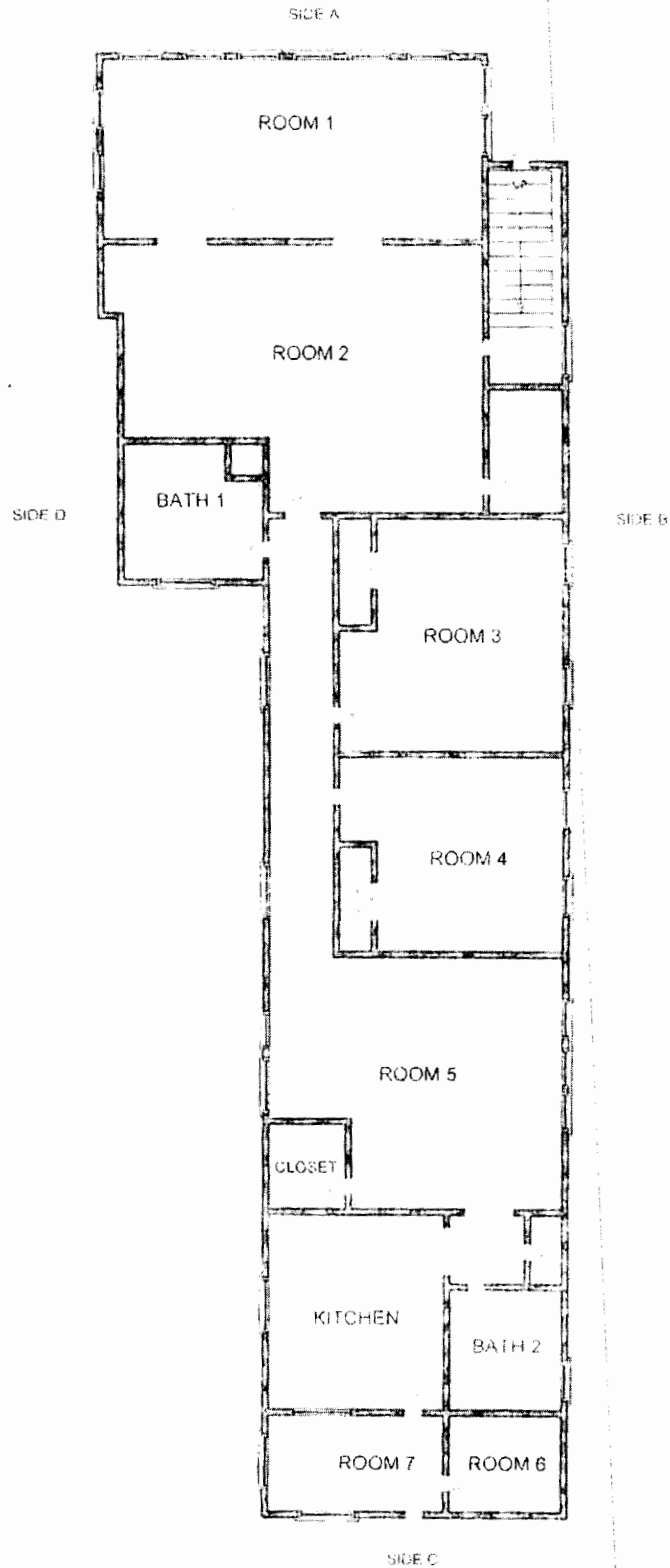
Paul D. Thomas
Operations Manager

534 HAMPTON PLACE
APARTMENT #1
FIRST FLOOR
PORTSMOUTH, VIRGINIA



DRAWING NOT TO SCALE
DECEMBER 15, 2007

534 HAMPTON PLACE
APARTMENT #2
SECOND FLOOR
PORTSMOUTH, VIRGINIA



DRAWING NOT TO SCALE
DECEMBER 15, 2007

Serial #XL309-U4143NR8108 Site: 534 Hampton Place Portsmouth, Virginia Date: 12/13/2007

No	Flr	Side	Room	Source	Sub	Feat	Cnd	Clr	Date/Time	Result	Pbc ± Prec
1			Shutter Cal 1						12/13/2007 11:16:46	...	NA
2			Calibrate						12/13/2007 11:25:49	POS	1.68 ± 0.34
3			Calibrate						12/13/2007 11:26:19	POS	3.06 ± 0.86
4			Calibrate						12/13/2007 11:26:37	POS	1.63 ± 0.43
5	2	A	Room 1	Window	Wood	Casing	Intact	White	12/13/2007 11:55:37	NEG	0.06 ± 0.31
6	2	A	Room 1	Window	Wood	Apron	Intact	White	12/13/2007 11:56:03	NEG	0.06 ± 0.31
7	2	A	Room 1	Window	Wood	Sash	Intact	White	12/13/2007 11:56:31	NEG	0.07 ± 0.42
8	2	A	Room 1	Window	Wood	Sill	Intact	White	12/13/2007 11:57:00	NEG	0.07 ± 0.26
9	2	A	Room 1	Window	Wood	Stops	Intact	White	12/13/2007 11:57:36	POS	18.71 ± 3.92
10	2	A	Room 1	Window	Wood	Trough	Intact	White	12/13/2007 11:58:05	POS	19.75 ± 4.14
11	2	A	Room 1	Window 2	Wood	Casing	Intact	White	12/13/2007 11:58:48	NEG	0.05 ± 0.32
12	2	A	Room 1	Window 2	Wood	Apron	Intact	White	12/13/2007 11:59:06	NEG	0.08 ± 0.22
13	2	A	Room 1	Window 2	Wood	Sash	Intact	White	12/13/2007 11:59:34	NEG	0.05 ± 0.18
14	2	A	Room 1	Window 2	Wood	Sash Ext	Intact	White	12/13/2007 12:00:33	POS	1.44 ± 0.32
15	2	A	Room 1	Window 2	Wood	Trough	Intact	White	12/13/2007 12:01:24	POS	8.71 ± 2.60
16	2	A	Room 1	Window 2	Wood	Sill	Intact	White	12/13/2007 12:01:52	NEG	0.13 ± 0.31
17	2	A	Room 1	Window 3	Wood	Casing	Intact	White	12/13/2007 12:02:41	NEG	0.10 ± 0.32
18	2	A	Room 1	Window 3	Wood	Apron	Intact	White	12/13/2007 12:03:09	NEG	0.03 ± 0.13
19	2	A	Room 1	Window 3	Wood	Sash	Intact	White	12/13/2007 12:03:33	NEG	0.20 ± 0.35
20	2	A	Room 1	Window 3	Wood	Sash Ext	Intact	White	12/13/2007 12:04:23	POS	1.72 ± 0.46
21	2	A	Room 1	Window 3	Wood	Trough	Intact	White	12/13/2007 12:05:11	POS	19.46 ± 3.89
22	2	A	Room 1	Window 3	Wood	Sill	Intact	White	12/13/2007 12:05:34	NEG	0.13 ± 0.37
23	2	A	Room 1	Window 4	Wood	Casing	Intact	White	12/13/2007 12:06:27	NEG	0.15 ± 0.40
24	2	A	Room 1	Window 4	Wood	Apron	Intact	White	12/13/2007 12:06:50	NEG	0.07 ± 0.23
25	2	A	Room 1	Window 4	Wood	Sash	Intact	White	12/13/2007 12:07:08	NEG	0.13 ± 0.27
26	2	A	Room 1	Window 4	Wood	Sash Ext	Intact	White	12/13/2007 12:07:58	POS	1.44 ± 0.34
27	2	A	Room 1	Window 4	Wood	Trough	Peeling	White	12/13/2007 12:09:03	POS	1.36 ± 0.35

No	Flr	Side	Room	Source	Sub	Feat	Cnd	Clr	Date/Time	Result	Pbc ± Prec
28	2	A	Room 1	Window 4	Wood	Sill	Peeling	White	12/13/2007 12:10:06	NEG	0.25 ± 0.34
29	2	A	Room 1	Window 5	Wood	Casing	Intact	White	12/13/2007 12:10:58	NEG	0.07 ± 0.16
30	2	A	Room 1	Window 5	Wood	Apron	Intact	White	12/13/2007 12:11:21	NEG	0.10 ± 0.21
31	2	A	Room 1	Window 5	Wood	Sash	Intact	White	12/13/2007 12:11:56	NEG	0.03 ± 0.19
32	2	A	Room 1	Window 5	Wood	Sash Ext	Intact	White	12/13/2007 12:12:28	POS	1.89 ± 0.55
33	2	A	Room 1	Window 5	Wood	Trough	Intact	White	12/13/2007 12:13:06	POS	7.13 ± 2.39
34	2	A	Room 1	Window 5	Wood	Sill	Peeling	White	12/13/2007 12:13:29	NEG	0.06 ± 0.37
35	2	A	Room 1	Window 6	Wood	Casing	Peeling	White	12/13/2007 12:13:59	NEG	0.17 ± 0.59
36	2	A	Room 1	Window 6	Wood	Apron	Peeling	White	12/13/2007 12:14:22	NEG	0.03 ± 0.16
37	2	A	Room 1	Window 6	Wood	Sash	Intact	White	12/13/2007 12:14:58	NEG	0.02 ± 0.02
38	2	A	Room 1	Window 6	Wood	Sash Ext	Intact	White	12/13/2007 12:15:34	POS	1.39 ± 0.29
39	2	A	Room 1	Window 6	Wood	Trough	Intact	White	12/13/2007 12:16:32	NEG	0.78 ± 0.18
40	2	A	Room 1	Window 6	Wood	Sill	Intact	White	12/13/2007 12:17:34	NEG	0.15 ± 0.39
41	2	B	Room 1	Window 7	Wood	Casing	Intact	White	12/13/2007 12:18:25	NEG	0.11 ± 0.36
42	2	B	Room 1	Window 7	Wood	Apron	Intact	White	12/13/2007 12:18:48	NEG	0.13 ± 0.38
43	2	B	Room 1	Window 7	Wood	Sash	Peeling	White	12/13/2007 12:19:21	NEG	0.08 ± 0.23
44	2	B	Room 1	Window 7	Wood	Sash Ext	Peeling	White	12/13/2007 12:19:51	POS	1.97 ± 0.52
45	2	B	Room 1	Window 7	Wood	Trough	Peeling	White	12/13/2007 12:20:38	POS	12.00 ± 3.04
46	2	B	Room 1	Window 7	Wood	Sill	Intact	White	12/13/2007 12:20:57	NEG	0.11 ± 0.21
47	2	B	Room 1	Window 8	Wood	Casing	Intact	White	12/13/2007 12:21:34	NEG	0.04 ± 0.18
48	2	B	Room 1	Window 8	Wood	Sash	Intact	White	12/13/2007 12:21:51	NEG	0.04 ± 0.17
49	2	B	Room 1	Window 8	Wood	Sash Ext	Intact	White	12/13/2007 12:22:25	POS	2.75 ± 0.83
50	2	B	Room 1	Window 8	Wood	Trough	Peeling	White	12/13/2007 12:23:03	POS	16.41 ± 3.72
51	2	B	Room 1	Window 8	Wood	Sill	Peeling	White	12/13/2007 12:23:22	NEG	0.11 ± 0.29
52	2	D	Room 1	Window 9	Wood	Casing	Intact	White	12/13/2007 12:24:07	NEG	0.02 ± 0.27
53	2	D	Room 1	Window 9	Wood	Apron	Intact	White	12/13/2007 12:24:24	NEG	0.05 ± 0.42
54	2	D	Room 1	Window 9	Wood	Sash	Intact	White	12/13/2007 12:24:41	NEG	0.02 ± 0.08
55	2	D	Room 1	Window 9	Wood	Sash Ext	Intact	White	12/13/2007 12:25:11	NEG	0.52 ± 0.23

No	Flr	Side	Room	Source	Sub	Feat	Cnd	Clr	Date/Time	Result	Pbc ± Prec
56	2	D	Room 1	Window 9	Wood	Trough	Peeling	White	12/13/2007 12:25:47	POS	10.10 ± 2.74
57	2	D	Room 1	Window 9	Wood	Sill	Intact	White	12/13/2007 12:26:31	NEG	0.07 ± 0.33
58	2	D	Room 1	Window 10	Wood	Casing	Intact	White	12/13/2007 12:27:35	NEG	0.05 ± 0.17
59	2	D	Room 1	Window 10	Wood	Apron	Intact	White	12/13/2007 12:27:56	NEG	0.15 ± 0.36
60	2	D	Room 1	Window 10	Wood	Sash	Intact	White	12/13/2007 12:28:18	NEG	0.07 ± 0.43
61	2	D	Room 1	Window 10	Wood	Sash Ext	Intact	White	12/13/2007 12:28:48	NEG	0.69 ± 0.23
62	2	D	Room 1	Window 10	Wood	Trough	Peeling	White	12/13/2007 12:40:31	POS	3.07 ± 1.01
63	2	D	Room 1	Window 10	Wood	Sill	Peeling	White	12/13/2007 12:40:55	NEG	0.14 ± 0.30
64	2	D	Room 2	Window 1	Wood	Casing	Peeling	White	12/13/2007 12:42:17	POS	15.45 ± 3.40
65	2	D	Room 2	Window 1	Wood	Apron	Peeling	White	12/13/2007 12:42:38	NEG	0.31 ± 0.36
66	2	D	Room 2	Window 1	Wood	Sash Ext	Intact	White	12/13/2007 12:43:41	NEG	0.87 ± 0.18
67	2	D	Room 2	Window 1	Wood	Trough	Peeling	White	12/13/2007 12:45:12	POS	17.40 ± 3.74
68	2	D	Room 2	Window 1	Wood	Sill	Peeling	White	12/13/2007 12:45:30	NEG	0.09 ± 0.33
69	2	D	Bath 1	Window		Sill	Intact	Other	12/13/2007 12:47:06	POS	5.31 ± 1.63
70	2	D	Bath 1	Window	Metal	Sash	Intact	Other	12/13/2007 12:47:35	POS	2.26 ± 0.78
71	2	D	Hall	Window 1	Wood	Casing	Intact	White	12/13/2007 12:48:51	NEG	0.00 ± 0.09
72	2	D	Hall	Window 1	Wood	Sash	Intact	White	12/13/2007 12:49:13	POS	3.74 ± 1.31
73	2	D	Hall	Window 1	Wood	Sash Ext	Intact	White	12/13/2007 12:49:51	POS	3.96 ± 1.28
74	2	D	Hall	Window 1	Wood	Trough	Peeling	White	12/13/2007 12:50:24	NEG	0.47 ± 0.26
75	2	D	Hall	Window 1	Wood	Sill	Peeling	White	12/13/2007 12:50:52	NEG	0.05 ± 0.32
76	2	D	Hall	Window 1	Wood	Apron	Intact	White	12/13/2007 12:51:13	NEG	0.00 ± 0.12
77	2	D	Hall	Window 2	Wood	Casing	Intact	White	12/13/2007 12:51:56	NEG	0.17 ± 0.30
78	2	D	Hall	Window 2	Wood	Sash	Intact	White	12/13/2007 12:52:33	POS	14.96 ± 3.63
79	2	D	Hall	Window 2	Wood	Sash Ext	Intact	White	12/13/2007 12:53:10	NEG	0.20 ± 0.30
80	2	D	Hall	Window 2	Wood	Trough	Intact	White	12/13/2007 12:53:48	NEG	0.49 ± 0.23
81	2	D	Hall	Window 2	Wood	Sill	Intact	White	12/13/2007 12:54:35	NEG	0.17 ± 0.36
82	2	B	Room 3	Window 1	Wood	Casing	Intact	White	12/13/2007 12:55:45	POS	15.07 ± 3.51
83	2	B	Room 3	Window 1	Wood	Apron	Intact	White	12/13/2007 12:56:04	POS	16.24 ± 3.40

No	Flr	Side	Room	Source	Sub	Feat	Cnd	Clr	Date/Time	Result	Pbc ± Prec
84	2	B	Room 3	Window 1	Wood	Sash	Intact	White	12/13/2007 12:56:29	POS	12.28 ± 3.03
85	2	B	Room 3	Window 1	Wood	Sash Ext	Intact	White	12/13/2007 12:56:52	POS	18.25 ± 3.50
86	2	B	Room 3	Window 1	Wood	Trough	Intact	White	12/13/2007 12:57:20	POS	11.91 ± 3.14
87	2	B	Room 3	Window 1	Wood	Sill	Intact	White	12/13/2007 12:57:39	NEG	0.31 ± 0.41
88	2	B	Room 3	Window 2	Wood	Casing	Fair	White	12/13/2007 12:58:35	POS	16.77 ± 3.72
89	2	B	Room 3	Window 2	Wood	Apron	Fair	White	12/13/2007 12:58:58	POS	14.12 ± 3.43
90	2	B	Room 3	Window 2	Wood	Sash	Intact	White	12/13/2007 12:59:26	POS	18.82 ± 3.98
91	2	B	Room 3	Window 2	Wood	Sash Ext	Intact	White	12/13/2007 12:59:45	POS	17.32 ± 3.68
92	2	B	Room 3	Window 2	Wood	Trough	Intact	White	12/13/2007 13:00:06	NEG	0.14 ± 0.23
93	2	B	Room 3	Window 2	Wood	Sill	Peeling	White	12/13/2007 13:00:33	NEG	0.18 ± 0.41
94	2	B	Room 4	Window 1	Wood	Casing	Intact	White	12/13/2007 13:01:35	POS	13.20 ± 3.23
95	2	B	Room 4	Window 1	Wood	Apron	Intact	White	12/13/2007 13:01:52	POS	15.24 ± 3.49
96	2	B	Room 4	Window 1	Wood	Sash	Intact	White	12/13/2007 13:02:12	POS	9.82 ± 2.74
97	2	B	Room 4	Window 1	Wood	Sash Ext	Intact	White	12/13/2007 13:02:32	POS	8.60 ± 2.63
98	2	B	Room 4	Window 1	Wood	Trough	Peeling	White	12/13/2007 13:03:04	POS	17.91 ± 3.79
99	2	B	Room 4	Window 1	Wood	Sill	Intact	White	12/13/2007 13:03:23	POS	3.96 ± 1.46
100	2	B	Room 4	Window 2	Wood	Casing	Intact	White	12/13/2007 13:03:51	POS	18.92 ± 3.74
101	2	B	Room 4	Window 2	Wood	Apron	Intact	White	12/13/2007 13:04:08	POS	16.15 ± 3.41
102	2	B	Room 4	Window 2	Wood	Sash	Peeling	White	12/13/2007 13:04:37	NEG	0.11 ± 0.20
103	2	B	Room 4	Window 2	Wood	Sash Ext	Peeling	White	12/13/2007 13:05:09	POS	14.71 ± 3.29
104	2	B	Room 4	Window 2	Wood	Trough	Peeling	White	12/13/2007 13:05:33	POS	20.48 ± 3.95
105	2	B	Room 4	Window 2	Wood	Sill	Peeling	White	12/13/2007 13:05:50	NEG	0.11 ± 0.15
106	2	D	Room 5	Window 1	Wood	Casing	Intact	White	12/13/2007 13:07:04	NEG	0.61 ± 0.51
107	2	D	Room 5	Window 1	Wood	Apron	Intact	White	12/13/2007 13:07:30	NEG	0.15 ± 0.35
108	2	D	Room 5	Window 1	Wood	Sash	Intact	White	12/13/2007 13:08:08	NEG	0.07 ± 0.27
109	2	D	Room 5	Window 1	Wood	Sash Ext	Intact	White	12/13/2007 13:08:40	POS	2.25 ± 0.76
110	2	D	Room 5	Window 1	Wood	Trough	Intact	White	12/13/2007 13:09:16	NEG	0.68 ± 0.22
111	2	D	Room 5	Window 1	Wood	Sill	Intact	White	12/13/2007 13:09:55	NEG	0.26 ± 0.38

No	Flr	Side	Room	Source	Sub	Feat	Cnd	Clr	Date/Time	Result	Pbc ± Prec
112	2	D	Room 5	20 Window 2	Wood	Casing	Intact	White	12/13/2007 13:10:49	NEG	0.17 ± 0.30
113	2	D	Room 5	Window 2	Wood	Sash	Intact	White	12/13/2007 13:11:22	NEG	0.11 ± 0.31
114	2	D	Room 5	Window 2	Wood	Sash Ext	Intact	White	12/13/2007 13:12:00	NEG	0.39 ± 0.29
115	2	D	Room 5	Window 2	Wood	Trough	Intact	White	12/13/2007 13:12:29	NEG	0.88 ± 0.19
116	2	D	Room 5	Window 2	Wood	Sill	Intact	White	12/13/2007 13:13:27	NEG	0.02 ± 0.30
117	2	B	Bath 2	21 Window	Wood	Casing	Intact	White	12/13/2007 13:14:19	NEG	0.05 ± 0.19
118	2	B	Bath 2	Window	Wood	Apron	Intact	White	12/13/2007 13:14:36	NEG	0.14 ± 0.26
119	2	B	Bath 2	Window	Wood	Sash	Intact	White	12/13/2007 13:15:06	POS	7.28 ± 2.48
120	2	B	Bath 2	Window	Wood	Sill	Intact	White	12/13/2007 13:15:42	NEG	0.40 ± 0.37
121	2	B	Bath 2	Window	Wood	Trough	Peeling	White	12/13/2007 13:16:26	POS	8.41 ± 2.39
122	2	C	Kitchen	22 Window 1	Metal	Sash	Intact	White	12/13/2007 13:17:27	POS	2.32 ± 0.97
123	2	C	Kitchen	Window 1	Metal	Sash Ext	Intact	White	12/13/2007 13:19:18	NEG	0.04 ± 0.36
124	2	C	Kitchen	Window 1	Metal	Trough	Intact	White	12/13/2007 13:19:42	NEG	0.00 ± 0.69
125	2	C	Kitchen	Window 1	Metal	Sill	Intact	White	12/13/2007 13:20:33	NEG	0.04 ± 0.15
126	2	D	Kitchen	23 Window 2	Metal	Sash	Intact	White	12/13/2007 13:21:12	POS	1.87 ± 0.62
127	2	D	Kitchen	Window 2	Metal	Sash Ext	Intact	White	12/13/2007 13:22:17	POS	2.03 ± 0.71
128	2	D	Kitchen	Window 2	Metal	Trough	Intact	White	12/13/2007 13:23:37	NEG	-0.52 ± 0.74
129	2	D	Kitchen	Window 2	Wood	Sill	Intact	White	12/13/2007 13:24:09	NEG	-0.37 ± 0.75
130	2	C	Kitchen	Window 2	Wood	Casing	Intact	White	12/13/2007 13:25:33	NEG	0.02 ± 0.41
131	2	C	Kitchen	Window 2	Wood	Sash	Intact	White	12/13/2007 13:25:50	NEG	0.17 ± 0.28
132	2	C	Kitchen	Window 2	Wood	Apron	Intact	White	12/13/2007 13:26:21	NEG	0.08 ± 0.31
133	2	C	Kitchen	Window 2	Wood	Sash Ext	Intact	White	12/13/2007 13:27:09	POS	3.55 ± 1.08
134	2	C	Kitchen	Window 2	Wood	Trough	Peeling	White	12/13/2007 13:28:29	POS	3.90 ± 1.28
135	2	C	Room 7	24 Window 1	Wood	Sill	Peeling	White	12/13/2007 13:29:03	NEG	0.02 ± 0.17
136	2	C	Room 7	25 Window 2	Wood	Casing	Intact	White	12/13/2007 13:29:40	NEG	0.18 ± 0.38
137	2	C	Room 7	Window 2	Wood	Apron	Intact	White	12/13/2007 13:30:16	NEG	0.03 ± 0.15
138	2	C	Room 7	Window 2	Wood	Sash	Intact	White	12/13/2007 13:30:32	NEG	0.24 ± 0.32
139	2	C	Room 7	Window 2	Wood	Sash Ext	Peeling	White	12/13/2007 13:31:16	NEG	0.15 ± 0.19

No	Flr	Side	Room	Source	Sub	Feat	Cnd	Clr	Date/Time	Result	Pbc ± Prec
140	2	C	Room 7	Window 2	Wood	Trough	Peeling	White	12/13/2007 13:31:54	NEG	0.17 ± 0.17
141	2	C	Room 7	Window 2	Wood	Sill	Intact	White	12/13/2007 13:32:28	NEG	0.08 ± 0.44
X 142	2	B	Room 2	Door	Wood	Door	Intact	White	12/13/2007 13:34:01	NEG	0.15 ± 0.33
143	2	B	Room 2	Door	Wood	Casing	Intact	White	12/13/2007 13:34:23	NEG	0.06 ± 0.27
144	2	B	Room 2	Door	Wood	Jamb	Intact	White	12/13/2007 13:34:48	NEG	0.00 ± 0.12
X 145	2	D	Room 3	Door 1	Wood	Door	Intact	White	12/13/2007 13:36:01	NEG	0.01 ± 0.23
146	2	D	Room 3	Door 1	Wood	Casing	Intact	White	12/13/2007 13:36:21	NEG	0.18 ± 0.43
147	2	D	Room 3	Door 1	Wood	Jamb	Intact	White	12/13/2007 13:36:58	NEG	0.04 ± 0.21
X 148	2	D	Room 3	Door 2	Wood	Door	Intact	White	12/13/2007 13:37:34	NEG	0.53 ± 0.42
149	2	D	Room 3	Door 2	Wood	Casing	Intact	White	12/13/2007 13:38:02	NEG	0.03 ± 0.17
150	2	D	Room 3	Door 2	Wood	Jamb	Intact	White	12/13/2007 13:38:27	NEG	0.03 ± 0.03
X 151	2	D	Room 3	Door 3	Wood	Door	Intact	White	12/13/2007 13:38:47	NEG	0.04 ± 0.23
152	2	D	Room 3	Door 3	Wood	Casing	Intact	White	12/13/2007 13:39:06	NEG	0.12 ± 0.28
153	2	D	Room 3	Door 3	Wood	Jamb	Intact	White	12/13/2007 13:39:37	NEG	0.03 ± 0.18
X 154	2	D	Room 4	Door 1	Wood	Door	Intact	White	12/13/2007 13:40:45	NEG	0.28 ± 0.46
155	2	D	Room 4	Door 1	Wood	Jamb	Intact	White	12/13/2007 13:41:27	NEG	0.06 ± 0.43
156	2	D	Room 4	Door 1	Wood	Casing	Intact	White	12/13/2007 13:41:52	NEG	0.15 ± 0.42
157	2	D	Room 4	Door 2	Wood	Door	Intact	White	12/13/2007 13:42:36	NEG	0.18 ± 0.44
158	2	D	Room 4	Door 2	Wood	Casing	Intact	White	12/13/2007 13:43:11	NEG	0.18 ± 0.39
159	2	D	Room 4	Door 2	Wood	Jamb	Intact	White	12/13/2007 13:43:48	NEG	0.27 ± 0.46
160	2	D	Room 4	Door 3	Wood	Door	Intact	White	12/13/2007 13:45:11	NEG	0.20 ± 0.48
161	2	D	Room 4	Door 3	Wood	Casing	Intact	White	12/13/2007 13:45:48	NEG	0.09 ± 0.41
162	2	D	Room 4	Door 3	Wood	Jamb	Intact	White	12/13/2007 13:46:05	NEG	0.06 ± 0.27
163	2	A	Bath 2	Door	Wood	Door	Intact	White	12/13/2007 13:47:09	NEG	0.09 ± 0.45
164	2	A	Bath 2	Door	Wood	Casing	Intact	White	12/13/2007 13:47:26	NEG	0.05 ± 0.15
165	2	A	Bath 2	Door	Wood	Jamb	Intact	White	12/13/2007 13:47:59	NEG	0.14 ± 0.36
X 166	2	A	Kitchen	Door	Wood	Door	Intact	White	12/13/2007 13:51:53	NEG	0.28 ± 0.39
167	2	A	Kitchen	Door	Wood	Casing	Intact	White	12/13/2007 13:52:36	NEG	0.09 ± 0.31

Handwritten notes:
 142
 145
 148
 151
 154
 166

No	Flr	Side	Room	Source	Sub	Feat	Cnd	Clr	Date/Time	Result	Pbc ± Prec
168	2	A	Kitchen	Door	Wood	Jamb	Intact	White	12/13/2007 13:52:57	POS	13.53 ± 3.12
169	2	C	Room 7	Door	Wood	Door	Poor	White	12/13/2007 13:53:34	NEG	0.01 ± 0.20
170	2	C	Room 7	Door	Wood	Casing	Poor	White	12/13/2007 13:53:50	POS	21.72 ± 4.02
171	2	C	Room 7	Door	Wood	Jamb	Peeling	White	12/13/2007 13:54:16	POS	4.15 ± 1.36
172	2	A	Exterior Front	Door	Wood	Jamb	Fair	Green	12/13/2007 13:56:10	POS	3.30 ± 1.12
173	2	A	Exterior Front	Door	Wood	Casing	Fair	Green	12/13/2007 13:56:37	POS	15.74 ± 3.36
174	2	A	Exterior Front	Door	Wood	Jamb	Fair	White	12/13/2007 13:56:59	POS	21.12 ± 3.89
175	1	A	Room 1	Window 1	Wood	Casing	Intact	Beige	12/13/2007 14:05:01	POS	7.10 ± 2.60
176	1	A	Room 1	Window 1	Wood	Sill	Intact	Beige	12/13/2007 14:05:35	POS	11.90 ± 2.88
177	1	A	Room 1	Window 1	Wood	Apron	Peeling	Beige	12/13/2007 14:06:08	POS	9.48 ± 2.68
178	1	A	Room 1	Window 2	Wood	Casing	Peeling	Beige	12/13/2007 14:06:33	POS	10.44 ± 2.56
179	1	A	Room 1	Window 2	Wood	Sill	Peeling	Beige	12/13/2007 14:06:50	POS	10.65 ± 2.75
180	1	A	Room 1	Window 2	Wood	Sash	Peeling	Beige	12/13/2007 14:07:11	POS	6.31 ± 1.77
181	1	A	Room 1	Window 3	Wood	Casing	Peeling	Beige	12/13/2007 14:07:38	POS	10.30 ± 2.69
182	1	A	Room 1	Window 3	Wood	Sill	Peeling	Beige	12/13/2007 14:07:58	POS	11.78 ± 2.77
183	1	A	Room 1	Window 3	Wood	Apron	Peeling	Beige	12/13/2007 14:08:16	POS	10.86 ± 2.99
184	1	A	Room 1	Window 4	Wood	Casing	Peeling	Beige	12/13/2007 14:08:36	POS	9.86 ± 2.83
185	1	A	Room 1	Window 4	Wood	Sill	Peeling	Beige	12/13/2007 14:08:53	POS	7.61 ± 2.44
186	1	A	Room 1	Window 4	Wood	Sash	Peeling	Beige	12/13/2007 14:09:10	POS	8.98 ± 2.56
187	1	B	Room 1	Window 5	Wood	Casing	Peeling	Beige	12/13/2007 14:09:33	POS	7.82 ± 2.59
188	1	B	Room 1	Window 5	Wood	Sill	Peeling	Beige	12/13/2007 14:09:52	POS	8.40 ± 2.65
189	1	B	Room 1	Window 5	Wood	Apron	Peeling	Beige	12/13/2007 14:10:08	POS	9.44 ± 2.41
190	1	B	Room 1	Window 6	Wood	Casing	Peeling	Beige	12/13/2007 14:10:32	POS	6.91 ± 2.53
191	1	B	Room 1	Window 6	Wood	Sill	Intact	Beige	12/13/2007 14:10:54	POS	10.70 ± 2.69
192	1	B	Room 1	Window 6	Wood	Sash	Intact	Beige	12/13/2007 14:11:14	POS	6.18 ± 1.77
193	1	D	Room 1	Window 7	Wood	Casing	Intact	Beige	12/13/2007 14:11:55	POS	7.23 ± 2.57
194	1	D	Room 1	Window 7	Wood	Sill	Intact	Beige	12/13/2007 14:12:11	POS	8.91 ± 2.63
195	1	D	Room 1	Window 8	Wood	Casing	Intact	Beige	12/13/2007 14:12:43	POS	9.67 ± 2.47

No	Flr	Side	Room	Source	Sub	Feat	Cnd	Clr	Date/Time	Result	Pbc ± Prec
196	1	D	Room 1	Window 8	Wood	Sill	Intact	Beige	12/13/2007 14:13:00	POS	8.70 ± 2.95
197	1	D	Room 1	Window 8	Wood	Sash	Intact	Beige	12/13/2007 14:13:19	POS	9.48 ± 2.89
198	1	C	Bath 1	Window	Wood	Casing	Intact	Beige	12/13/2007 14:14:15	NEG	0.16 ± 0.33
199	1	C	Bath 1	Window	Wood	Sash	Intact	Beige	12/13/2007 14:14:50	NEG	0.16 ± 0.30
200	1	C	Bath 1	Window	Wood	Sill	Peeling	Beige	12/13/2007 14:15:17	NEG	0.08 ± 0.42
201	1	C	Bath 1	Window	Wood	Sash Ext	Peeling	Beige	12/13/2007 14:15:59	POS	4.50 ± 1.28
202	1	C	Bath 1	Window	Wood	Trough	Peeling	White	12/13/2007 14:16:51	NEG	0.25 ± 0.25
203	1	D	Hall	Window 1	Wood	Casing	Intact	Beige	12/13/2007 14:17:46	POS	14.30 ± 3.23
204	1	D	Hall	Window 1	Wood	Sash	Intact	Beige	12/13/2007 14:18:05	NEG	0.20 ± 0.31
205	1	D	Hall	Window 1	Wood	Apron	Intact	Beige	12/13/2007 14:18:28	POS	13.57 ± 3.16
206	1	D	Hall	Window 1	Wood	Sill	Peeling	Beige	12/13/2007 14:18:48	POS	16.46 ± 3.53
207	1	D	Hall	Window 1	Wood	Sash Ext	Peeling	Beige	12/13/2007 14:19:16	POS	2.84 ± 0.86
208	1	D	Hall	Window 1	Wood	Trough	Peeling	White	12/13/2007 14:20:03	NEG	0.49 ± 0.23
209	1	D	Hall	Window 2	Wood	Casing	Intact	Beige	12/13/2007 14:21:03	POS	11.42 ± 3.11
210	1	D	Hall	Window 2	Wood	Sash	Intact	Beige	12/13/2007 14:21:22	POS	2.08 ± 0.71
211	1	D	Hall	Window 2	Wood	Apron	Peeling	Beige	12/13/2007 14:22:08	POS	12.32 ± 3.24
212	1	D	Hall	Window 2	Wood	Sill	Peeling	Beige	12/13/2007 14:22:26	NEG	0.06 ± 0.20
213	1	D	Hall	Window 2	Wood	Sash Ext	Peeling	Beige	12/13/2007 14:22:46	POS	11.53 ± 3.13
214	1	D	Hall	Window 2	Wood	Trough	Peeling	Beige	12/13/2007 14:23:10	POS	3.14 ± 0.90
215	1	B	Room 3	Window 1	Wood	Casing	Intact	Beige	12/13/2007 14:24:20	POS	15.58 ± 3.37
216	1	B	Room 3	Window 1	Wood	Sash	Intact	Beige	12/13/2007 14:24:49	POS	16.92 ± 3.63
217	1	B	Room 3	Window 1	Wood	Sill	Peeling	Beige	12/13/2007 14:25:10	POS	18.06 ± 3.67
218	1	B	Room 3	Window 1	Wood	Apron	Intact	Beige	12/13/2007 14:25:30	POS	15.59 ± 3.42
219	1	B	Room 3	Window 1	Wood	Trough	Peeling	White	12/13/2007 14:26:27	POS	12.99 ± 3.22
220	1	B	Room 3	Window 2	Wood	Casing	Intact	Beige	12/13/2007 14:30:27	POS	2.49 ± 0.97
221	1	B	Room 3	Window 2	Wood	Sill	Intact	Beige	12/13/2007 14:31:04	POS	14.45 ± 3.23
222	1	B	Room 3	Window 2	Wood	Apron	Intact	Beige	12/13/2007 14:31:24	POS	2.56 ± 0.81
223	1	B	Room 3	Window 2	Wood	Sash	Intact	Beige	12/13/2007 14:32:05	POS	11.44 ± 2.85

No	Flr	Side	Room	Source	Sub	Feat	Cnd	Clr	Date/Time	Result	Pbc ± Prec
224	1	B	Room 3	Window 2	Wood	Trough	Peeling	White	12/13/2007 14:32:36	POS	2.70 ± 0.84
225	1	B	Room 4	79 Window 1	Wood	Casing	Intact	Beige	12/13/2007 14:33:48	POS	2.46 ± 0.82
226	1	B	Room 4	Window 1	Wood	Apron	Intact	Beige	12/13/2007 14:34:22	POS	2.32 ± 0.75
227	1	B	Room 4	Window 1	Wood	Sill	Intact	Beige	12/13/2007 14:35:21	POS	15.16 ± 3.23
228	1	B	Room 4	Window 1	Wood	Sash	Intact	Beige	12/13/2007 14:35:41	NEG	0.36 ± 0.28
229	1	B	Room 4	80 Window 2	Wood	Casing	Intact	Beige	12/13/2007 14:36:26	POS	14.68 ± 3.28
230	1	B	Room 4	Window 2	Wood	Apron	Peeling	Beige	12/13/2007 14:36:51	POS	16.17 ± 3.54
231	1	B	Room 4	Window 2	Wood	Sill	Peeling	Beige	12/13/2007 14:37:10	POS	15.74 ± 3.56
232	1	B	Room 4	Window 2	Wood	Sash Ext	Intact	Beige	12/13/2007 14:37:40	POS	15.77 ± 3.38
233	1	D	Room 5	47 Window 1	Wood	Casing	Intact	White	12/13/2007 14:39:09	POS	11.90 ± 3.07
234	1	D	Room 5	Window 1	Wood	Sill	Intact	White	12/13/2007 14:39:24	POS	15.18 ± 3.51
235	1	D	Room 5	Window 1	Wood	Apron	Intact	White	12/13/2007 14:39:40	INCOM	0.13 ± 0.26
236	1	D	Room 5	Window 1	Wood	Apron	Intact	White	12/13/2007 14:40:05	NEG	0.00 ± 0.16
237	1	D	Room 5	Window 1	Wood	Sash	Intact	White	12/13/2007 14:40:23	POS	3.82 ± 1.27
238	1	D	Room 5	48 Window 2	Wood	Casing	Intact	White	12/13/2007 14:40:57	NEG	0.01 ± 0.20
239	1	D	Room 5	Window 2	Wood	Sill	Intact	White	12/13/2007 14:41:14	NEG	0.36 ± 0.40
240	1	D	Room 5	Window 2	Wood	Sash	Intact	White	12/13/2007 14:42:14	POS	4.70 ± 1.84
241	1	D	Room 5	49 Window 3	Wood	Casing	Intact	White	12/13/2007 14:43:21	POS	3.32 ± 1.07
242	1	D	Room 5	Window 3	Wood	Sill	Intact	White	12/13/2007 14:43:48	POS	17.89 ± 3.94
243	1	D	Room 5	Window 3	Wood	Sash	Intact	White	12/13/2007 14:44:10	POS	4.60 ± 1.41
244	1	B	Room 5	50 Window 4	Wood	Casing	Intact	White	12/13/2007 14:44:50	POS	13.58 ± 3.17
245	1	B	Room 5	Window 4	Wood	Sill	Intact	White	12/13/2007 14:45:08	POS	5.96 ± 2.05
246	1	B	Room 5	Window 4	Wood	Sash	Intact	White	12/13/2007 14:45:26	NEG	0.17 ± 0.17
247	1	B	Room 5	Window 4	Wood	Apron	Intact	White	12/13/2007 14:45:54	POS	10.64 ± 3.04
248	1	B	Room 5	51 Window 5	Wood	Casing	Intact	White	12/13/2007 14:46:20	POS	13.84 ± 3.11
249	1	B	Room 5	Window 5	Wood	Sill	Peeling	White	12/13/2007 14:46:38	POS	15.21 ± 3.68
250	1	B	Room 5	Window 5	Wood	Sash	Peeling	White	12/13/2007 14:46:55	NEG	0.18 ± 0.23
251	1	B	Room 5	Window 5	Wood	Apron	Peeling	White	12/13/2007 14:47:30	POS	15.92 ± 3.36

No	Flr	Side	Room	Source	Sub	Feat	Cnd	Clr	Date/Time	Result	Pbc ± Prec
252	1	B	Room 5	46 Window 6	Wood	Casing	Peeling	White	12/13/2007 14:48:14	POS	14.53 ± 3.29
253	1	B	Room 5	Window 6	Wood	Sill	Peeling	White	12/13/2007 14:48:34	POS	12.58 ± 3.12
254	1	B	Room 5	Window 6	Wood	Apron	Intact	White	12/13/2007 14:48:56	POS	17.11 ± 3.73
255	1	B	Room 5	Window 6	Wood	Sash	Intact	White	12/13/2007 14:49:16	POS	17.02 ± 3.77
256	1	B	Room 5 /Closet	47 Window	Wood	Casing	Intact	White	12/13/2007 14:50:48	POS	6.30 ± 2.36
257	1	B	Room 5 /Closet	Window	Wood	Sill	Intact	White	12/13/2007 14:51:09	POS	4.27 ± 1.41
258	1	B	Room 5 /Closet	Window	Wood	Apron	Intact	White	12/13/2007 14:51:30	POS	4.69 ± 1.36
259	1	B	Room 5 /Closet	Window	Wood	Sash	Intact	White	12/13/2007 14:51:53	POS	6.00 ± 1.91
260	1	B	Bath 2	78 Window	Wood	Casing	Intact	White	12/13/2007 14:52:23	POS	2.33 ± 0.87
261	1	B	Bath 2	Window	Wood	Sill	Peeling	Beige	12/13/2007 14:53:01	POS	3.45 ± 1.08
262	1	B	Bath 2	Window	Wood	Sash	Peeling	Beige	12/13/2007 14:53:31	POS	2.38 ± 0.78
263	1	B	Bath 2	Window	Wood	Apron	Peeling	Beige	12/13/2007 14:54:02	POS	1.99 ± 0.69
264	1	B	Bath 2	Window	Wood	Sash Ext	Peeling	Beige	12/13/2007 14:55:06	NEG	0.64 ± 0.24
265	1	B	Bath 2	Window	Wood	Trough	Peeling	White	12/13/2007 14:56:09	POS	2.00 ± 0.70
266	1	D	Kitchen	49 Window	Wood	Casing	Intact	White	12/13/2007 14:57:51	NEG	0.44 ± 0.36
267	1	D	Kitchen	Window	Wood	Sill	Intact	White	12/13/2007 14:58:55	NEG	0.38 ± 0.39
268	1	D	Kitchen	Window	Wood	Apron	Intact	White	12/13/2007 14:59:29	NEG	0.13 ± 0.35
269	1	D	Kitchen	Window	Wood	Sash	Intact	White	12/13/2007 14:59:47	NEG	0.76 ± 0.40
270	1	D	Kitchen	Window	Wood	Sash Ext	Intact	White	12/13/2007 15:01:04	NEG	0.29 ± 0.35
271	1	D	Kitchen	Window	Wood	Trough	Intact	White	12/13/2007 15:01:40	NEG	0.03 ± 0.03
272	1	D	Kitchen	Window	Wood	Stops	Intact	White	12/13/2007 15:02:03	POS	1.39 ± 0.35
273	1	D	Room 6	50 Window	Wood	Casing	Intact	Beige	12/13/2007 15:04:27	POS	10.47 ± 2.79
274	1	D	Room 6	Window	Wood	Sill	Intact	Beige	12/13/2007 15:04:54	POS	10.03 ± 2.62
275	1	D	Room 6	Window	Wood	Sash	Intact	Beige	12/13/2007 15:05:10	POS	12.06 ± 2.91
276	1	D	Room 6	Window	Wood	Apron	Intact	Beige	12/13/2007 15:05:24	POS	12.65 ± 2.96
277	1	C	Room 7	51 Window	Wood	Casing	Intact	Beige	12/13/2007 15:05:59	NEG	0.40 ± 0.27
278	1	C	Room 7	Window	Wood	Sill	Intact	Beige	12/13/2007 15:06:37	NEG	0.02 ± 0.22
279	1	C	Room 7	Window	Wood	Apron	Intact	Beige	12/13/2007 15:06:52	NEG	0.64 ± 0.36

No	Flr	Side	Room	Source	Sub	Feat	Cnd	Clr	Date/Time	Result	Pbc ± Prec
280	1	C	Room 7	Window	Wood	Sash	Intact	Beige	12/13/2007 15:07:54	NEG	0.04 ± 0.31
281	1	C	Room 2	(12) Door	Wood	Door	Intact	Beige	12/13/2007 15:10:04	POS	8.63 ± 2.42
282	1	C	Room 2	Door	Wood	Casing	Intact	Beige	12/13/2007 15:10:23	POS	16.01 ± 3.47
283	1	C	Room 2	Door	Wood	Jamb	Intact	Beige	12/13/2007 15:10:38	POS	7.58 ± 2.56
284	1	A	Room 3	(12) Door 1	Wood	Door	Intact	Beige	12/13/2007 15:11:31	POS	5.19 ± 1.47
285	1	A	Room 3	Door 1	Wood	Casing	Intact	Beige	12/13/2007 15:11:52	POS	15.71 ± 3.41
286	1	A	Room 3	Door 1	Wood	Jamb	Intact	Beige	12/13/2007 15:12:12	POS	12.48 ± 3.07
287	1	D	Room 3	(14) Door 2	Wood	Door	Intact	Beige	12/13/2007 15:12:38	POS	2.62 ± 0.90
288	1	D	Room 3	Door 2	Wood	Casing	Intact	Beige	12/13/2007 15:13:10	POS	12.95 ± 3.26
289	1	D	Room 3	Door 2	Wood	Jamb	Peeling	Beige	12/13/2007 15:13:27	POS	8.39 ± 2.46
290	1	D	Room 4	(17) Door 1	Wood	Door	Peeling	Beige	12/13/2007 15:14:11	POS	3.51 ± 1.07
291	1	D	Room 4	Door 1	Wood	Casing	Peeling	Beige	12/13/2007 15:14:38	POS	15.12 ± 3.38
292	1	D	Room 4	Door 1	Wood	Jamb	Peeling	Beige	12/13/2007 15:15:04	POS	14.78 ± 3.12
293	1	D	Room 4	(16) Door 2	Wood	Door	Peeling	Beige	12/13/2007 15:15:29	POS	1.46 ± 0.44
294	1	D	Room 4	Door 2	Wood	Casing	Peeling	Beige	12/13/2007 15:16:31	POS	16.61 ± 3.88
295	1	D	Room 4	Door 2	Wood	Jamb	Peeling	Beige	12/13/2007 15:16:46	POS	16.33 ± 3.72
296	1	B	Hall	(17) Door	Wood	Door	Peeling	Beige	12/13/2007 15:17:14	POS	6.79 ± 2.27
297	1	B	Hall	Door	Wood	Casing	Peeling	Beige	12/13/2007 15:17:32	POS	14.23 ± 3.34
298	1	B	Hall	Door	Wood	Jamb	Peeling	Beige	12/13/2007 15:17:54	POS	8.49 ± 2.47
299	1	B	Bath 1	(18) Door	Wood	Door	Peeling	Beige	12/13/2007 15:18:23	POS	7.87 ± 2.69
300	1	B	Bath 1	Door	Wood	Casing	Peeling	Beige	12/13/2007 15:18:40	NEG	0.13 ± 0.35
301	1	B	Bath 1	Door	Wood	Jamb	Intact	Beige	12/13/2007 15:19:15	POS	14.14 ± 3.31
302	1	B	Room 5	(15) Door	Wood	Door	Intact	Beige	12/13/2007 15:20:29	POS	1.07 ± 0.26
303	1	B	Room 5	Door	Wood	Casing	Intact	Beige	12/13/2007 15:22:59	POS	1.64 ± 0.50
304	1	B	Room 5	Door	Wood	Jamb	Intact	Beige	12/13/2007 15:24:01	POS	1.65 ± 0.51
305	1	B	Bath 2	(20) Door	Wood	Door	Intact	Beige	12/13/2007 15:25:08	POS	5.09 ± 2.04
306	1	B	Bath 2	Door	Wood	Casing	Intact	Beige	12/13/2007 15:25:25	POS	4.15 ± 1.36
307	1	B	Bath 2	Door	Wood	Jamb	Intact	Beige	12/13/2007 15:25:46	POS	6.06 ± 2.19

Site: 534 Hampton Place Portsmouth, Virginia Date: Paint Page 12

No	Flr	Side	Room	Source	Sub	Feat	Cnd	Clr	Date/Time	Result	Pbc ± Prec
308	1	C	Kitchen	80 Door	Wood	Door	Intact	White	12/13/2007 15:27:28	POS	3.38 ± 0.96
309	1	C	Kitchen	Door	Wood	Casing	Intact	White	12/13/2007 15:27:55	POS	5.10 ± 1.44
310	1	C	Kitchen	Door	Wood	Jamb	Peeling	Beige	12/13/2007 15:28:29	POS	14.39 ± 3.71
311	1	A	Exterior Front	22 Door	Wood	Door	Poor	Green	12/13/2007 15:30:56	POS	2.37 ± 0.84
312	1	A	Exterior Front	Door	Wood	Casing	Peeling	White	12/13/2007 15:31:43	POS	20.51 ± 3.93
313	1	A	Exterior Front	Door	Wood	Jamb	Peeling	White	12/13/2007 15:32:01	POS	15.71 ± 3.51
314			Calibrate						12/13/2007 15:33:51	POS	1.93 ± 0.59
315			Calibrate						12/13/2007 15:34:24	POS	3.39 ± 0.96
316			Calibrate						12/13/2007 15:34:38	POS	1.62 ± 0.29